



THE WHY BEHIND THE SMILE: MOTIVATIONS FOR ORTHODONTIC CARE

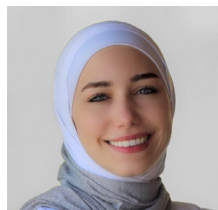
DR. MARIA DOUGHAN

This course provides a systematic examination of malocclusion, elucidating its physiological and psychosocial consequences. The core content delves into the primary motivations driving patients towards orthodontic interventions, highlighted through case studies. Key areas covered include functional determinants, aesthetic factors, and spatial challenges.

EDUCATIONAL OBJECTIVES

- Acquire an understanding of malocclusion's multifaceted impacts, from functional disorders to societal implications
- Understand key aesthetic and functional determinants in orthodontic treatment need, navigating the challenges of tooth spacing and crowding
- Understand the critical importance of implementing interceptive strategies during pivotal growth phases

CLINICIAN



MARIA DOUGHAN, DDS, MSC is a Clinical Assistant Professor at the Department of Orthodontics and Pediatric Dentistry at the University of Maryland Dental School. She earned her DDS from Saint Joseph University in Lebanon and completed her residency training and MSc in Orthodontics at the American University of Beirut. Her research interests include periodontal disease, orthodontic compliance, and psychosocial impacts of malocclusion.

CANCELLATION POLICY

Cancellations received up to 72 hours prior to the course will receive a 50% refund. No refunds will be given for cancellations received within 72 hours of the course. Please note that Zoom will allow you to cancel out of a Zoom event at any time, however, all cancellations for this course must be made directly with UBC in accordance with this UBC CDE cancellation policy. Continuing Dental Education at The University of British Columbia reserves the right to cancel courses or switch instructors if deemed necessary by low enrolment, instructor cancellation or other unforeseen issues. In case of course cancellation by UBC CDE a full refund will be issued.

ADA C-E-R-P® | Continuing Education
Recognition Program

Continuing Dental Education (CDE) at the University of British Columbia (UBC) is an ADA CERP Recognized Provider. ADA CERP is a service of the American Dental Association to assist dental professionals in identifying quality providers of continuing dental education. ADA CERP does not approve or endorse individual courses or instructors, nor does it imply acceptance of credit hours by boards of dentistry. CDE at UBC designates this activity for the above listed hours of instruction. Concerns or complaints about a CE provider may be directed to the provider or to the Commission for Continuing Education Provider Recognition at CCEPR.ada.org. This continuing education activity has been planned and implemented in accordance with the standards of the ADA Continuing Education Recognition Program (ADA CERP) through joint efforts between CDE at UBC and Association for Continuing Dental Education (ACDE).

DISCLAIMER: Dental education institutions have an obligation to disseminate new knowledge related to dental practice. Some presentations may include controversial materials or commercial references. Sponsorship of a continuing education course by The University of British Columbia does not imply endorsement of a particular philosophy, procedure or product by The University of British Columbia. Fee in full must accompany registration. The tuition fee is deductible for Canadian Income Tax purposes. See cancellation policy.

FRIDAY

MAY 24, 2024

8:00 AM - 9:00 AM (PACIFIC)

(1 Hour of Instruction)

COST:

\$59 CAD

No discounts or waivers are available for the ACDE webinar series.

REGISTER:

dentistry.ubc.ca/cde

This course will be provided
via **Zoom (Live Webinar)**.

CONTACT:

P: 604.822.6156

E: cde@dentistry.ubc.ca



Association For Continuing Dental Education

The Association of Continuing Dental Education (ACDE) brings together individuals who represent college- and university-based continuing dental education programs associated with accredited dental schools in Canada and the United States. The ACDE is here to serve you, the dental professional, in delivering high quality, evidence-based continuing dental education programs to meet your educational needs.

The University of British Columbia, Continuing Dental Education in conjunction with the ACDE, and along with 30 of its member schools, jointly presents the "ACDE Webinar Series". This series features university-based key opinion leaders presenting on numerous topics on multiple dates and times. Presentations are available to meet every dental health care professional's schedule and interests.

Please visit dentistry.ubc.ca/cde for a list of ACDE webinar offerings.